

PRODUCT INFORMATION PACKET

Model No: 254TTDX4015
Catalog No: E193
20,3600,DP,254JMV,3/60/200
JM



Regal and Marathon are trademarks of Regal Beloit Corporation or one of its affiliated companies.
©2018 Regal Beloit Corporation, All Rights Reserved. MC017097E





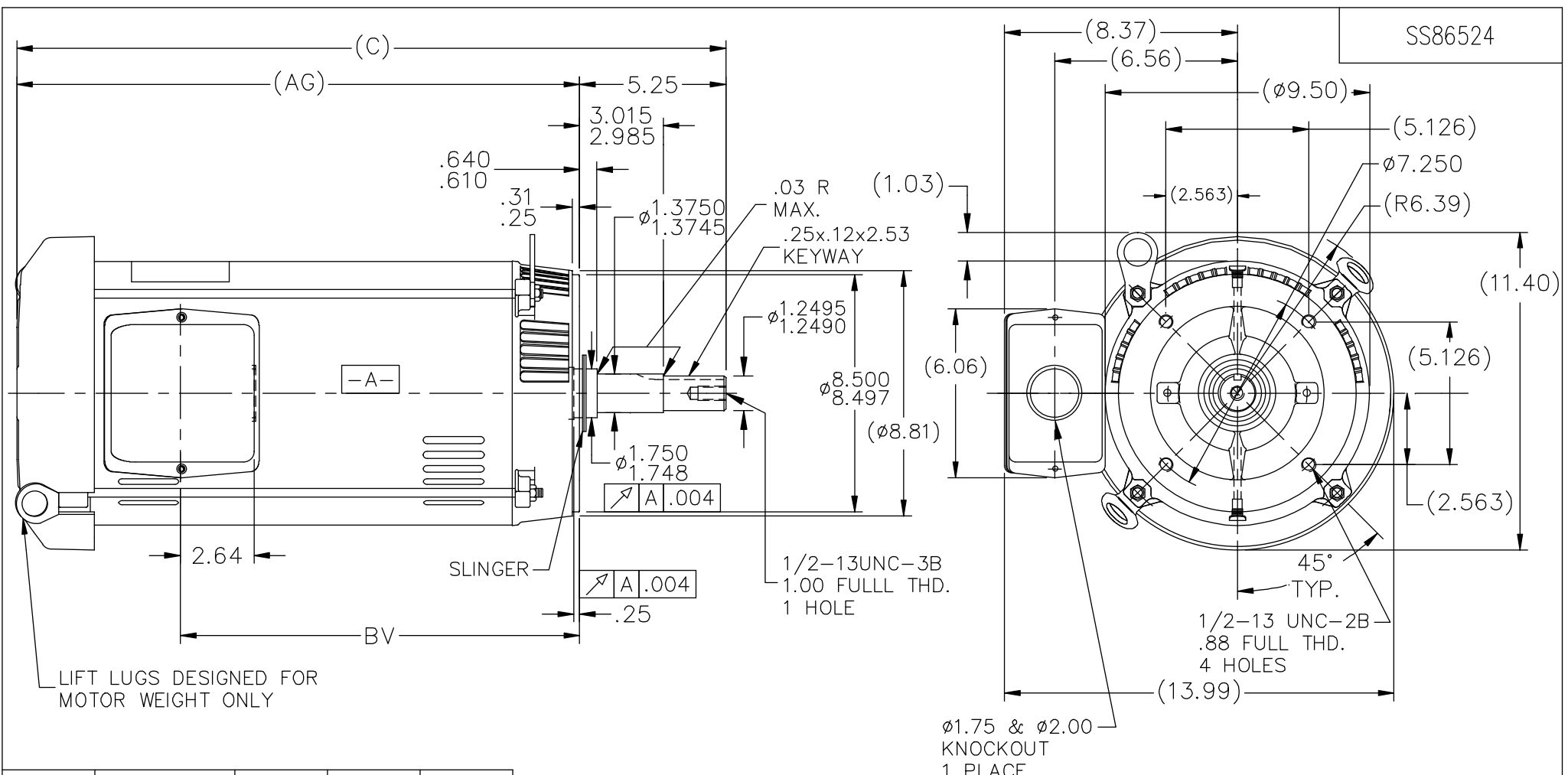
Nameplate Specifications

Output HP	20 Hp	Output KW	14.9 kW
Frequency	60 Hz	Voltage	200 V
Current	53.0 A	Speed	3520 rpm
Service Factor	1.15	Phase	3
Efficiency	91 %	Duty	Continuous
Insulation Class	B	Design Code	B
KVA Code	F	Frame	254JMV
Enclosure	Drip Proof	Overload Protector	No
Ambient Temperature	40 °C	Drive End Bearing Size	6309
Opp Drive End Bearing Size	6208	UL	Recognized
CSA	Y	CE	Y
IP Code	12		

Technical Specifications

Electrical Type	Squirrel Cage Induction Run	Starting Method	Across The Line
Poles	2	Rotation	Reversible
Mounting	Round	Motor Orientation	Shaft Down
Drive End Bearing	Ball	Opp Drive End Bearing	Ball
Frame Material	Rolled Steel	Shaft Type	JM
Overall Length	23.7 in	Frame Length	13.40 in
Shaft Diameter	1.250 in	Shaft Extension	5.25 in
Assembly/Box Mounting	F1/F2 Capable		
Outline Drawing	A-SS86524-1340	Connection Diagram	A-EE7300

This is an uncontrolled document once printed or downloaded and is subject to change without notice. Date Created: 06/29/2018



DASH	FR.	C	BV	AG
1340	254JM	23.70	12.68	18.45
1515	254/256JM	25.45	14.43	20.20
1545	254/256JM	25.75	14.73	20.50

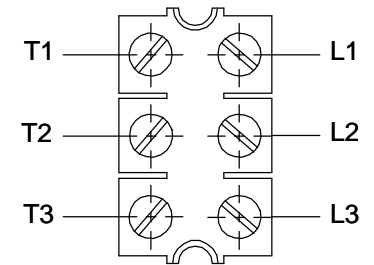
- NOTES:
 1. NAMEPLATE TO BE READ FROM SHAFT EXT. END OF MOTOR.
 2. BOX CAN BE MOUNTED IN 90° STEPS.

NO.	REVISION	BY & DATE	CHK	ANG	±7'30"	TOLERANCES UNLESS SPECIFIED		MARATHON ELECTRIC	DRAWN DJK 10-29-1993		
						DEC.	INCHES				
11	ADDED ITEM #1545(256TTDX4041)	PVR 07/11/2013	JD								
10	REVISED INTERNAL THREAD LENGTH ON SHAFT FROM 1.25 TO 1.00 ECN 16312	MSG 5/24/2010	ML	DEC.	INCHES	.X	±.1		CHK ML 11-01-1993		
9	UPDATED DRAWING	TJW 04/27/2007		.XX	±.03				APPD DRN 11-01-1993		
8	REDRAWN IN AUTOCAD	TAT 07-06-2004		.XXX	±.005				SCALE 3=16		
7	REVISED DIM. 2.70 TO 2.64 CN 29200-185	CAV 02-24-2000		.XXXX	±.0005				REF		
									FMF		
									PREV		
THIS DRAWING IN DESIGN AND DETAIL IS OUR PROPERTY AND MUST NOT BE USED EXCEPT IN CONNECTION WITH OUR WORK ALL RIGHTS OF DESIGN AND INVENTION ARE RESERVED THIS IS AN ELECTRONICALLY GENERATED DOCUMENT - DO NOT SCALE THIS PRINT						RFP	CAD FILE ss86524	SIZE A	DRAWING NO. SS86524	PAGE OF	REV. 11
						DIST LB					

**THREE PHASE - SINGLE VOLTAGE
MOTOR - CONDUIT BOX @ 'A'**

**TO REVERSE ROTATION:
INTERCHANGE ANY TWO
LINE LEAD CONNECTIONS.**

TERMINAL BLOCK WHEN SPECIFIED



VIEW OF TERMINAL END

**IF MOTOR HAS
6 LEADS**



A-9806 DECAL

**OPTIONAL CORD
CONNECTION**


- L1 _____ WHITE _____
- L2 _____ RED _____
- L3 _____ BLACK _____

DRAWING REVISION AB	REVISION BY JJB	DATE 06-27-2017
ECO ECO-0125361	APPROVED BY TB	DATE 06-27-2017
ECO DESCRIPTION UPDATED TO CURRENT STANDARDS		
<small>COPYRIGHT REGAL BELOIT AMERICA, INC. ALL RIGHTS RESERVED. PROPRIETARY AND CONFIDENTIAL INFORMATION - THIS DOCUMENT IS THE PROPERTY OF REGAL BELOIT AMERICA, INC. ("OWNER") AND CONTAINS OWNER'S PROPRIETARY INFORMATION. ANY PERSON, CORPORATION OR OTHER FIRM RECEIVING IT IS DEEMED, BY RECEIVING IT, TO AGREE THAT IT, AND/OR ANY PART OF IT, SHALL NOT BE DISCLOSED TO ANY PERSON, CORPORATION OR OTHER ENTITY, DUPLICATED, AND/OR USED, EXCEPT AS EXPRESSLY APPROVED IN WRITING IN ADVANCE BY OWNER. THIS DOCUMENT SHALL BE RETURNED TO OWNER UPON REQUEST. IT MAY BE SUBJECT TO CERTAIN RESTRICTIONS UNDER APPLICABLE EXPORT CONTROL LAWS AND REGULATIONS.</small>		



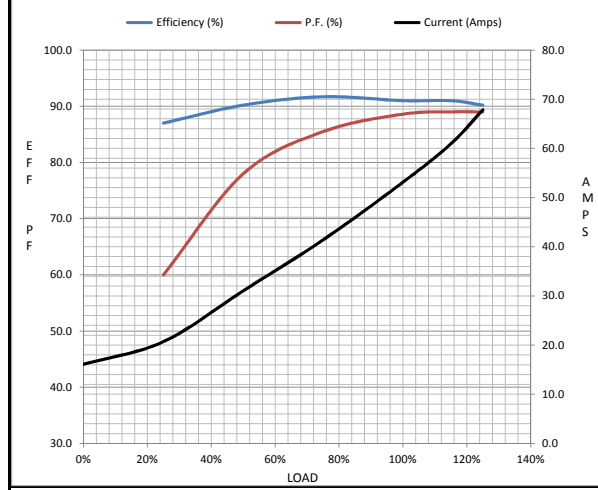
DRAWN BY DA
DATE 03-26-1993
APPROVED BY TB
DATE 03-26-1993
REFERENCE
THIRD ANGLE PROJECTION

Regal Beloit America, Inc.	
MATERIAL	PROCESS/FINISH
SIZE A	DRAWING NUMBER EE7300
SHEET 1 OF 1	

Data Sheet		254TTDX4015
Date: 15-06-2017		Submittal
Customer: _____		Data @ 200 V
Attention: _____		
Submitted by: FAREEDA DUDEKULA		

Motor Load Data								
Load	0%	25%	50%	75%	100%	115%	125%	LR
Current (Amps)	16.1	20.7	31.1	41.4	53.1	61.0	67.9	331
Torque (ft-lb)	0.00	7.5	15.0	22.2	30.0	34.5	37.5	52.5
RPM	3600	3580	3565	3545	3520	3,515	3490	0
Efficiency (%)		87.0	90.2	91.7	91.0	91.0	90.2	
P.F. (%)	9.0	60.0	78.0	85.5	88.6	89.0	89.0	40.0

Motor Speed Data						Information Block	
	LR	Pull-Up	BD	Rated	Idle		
Speed (RPM)	0	1800	3050	3520	3600		
Current (Amps)	331	299	207	53.1	16.1		
Torque (ft-lb)	52.5	48.0	86.5	30.0	0.00		



HP	20.0			
Sync. RPM	3600			
Frame	254			
Enclosure	DP			
Construction	TDX			
Voltage	200 V			
Frequency	60 Hz			
Design	A			
LR Code letter	F			
Service Factor	1.15			
Temp Rise @ FL	45 ° C			
Duty	CONT			
Ambient	40 ° C			
Elevation	1,000 feet			
Rotor/Shaft wk ²	0.65 Lb-Ft ²			
Ref Wdg	K2152191 NONE			
Sound Pressure @ 1M	78 dBA			
VFD Rating	NONE			
Outline Dwg	A-SS86524-1340			
Conn. Diag	A-EE7300			
Additional Specifications:				
0				
365THFS8036				
EQUIV CKT (OHMS / PHASE)				
R1	R2	X1	X2	Xm
0.0540	0.0430	0.2050	0.2170	6.6300

